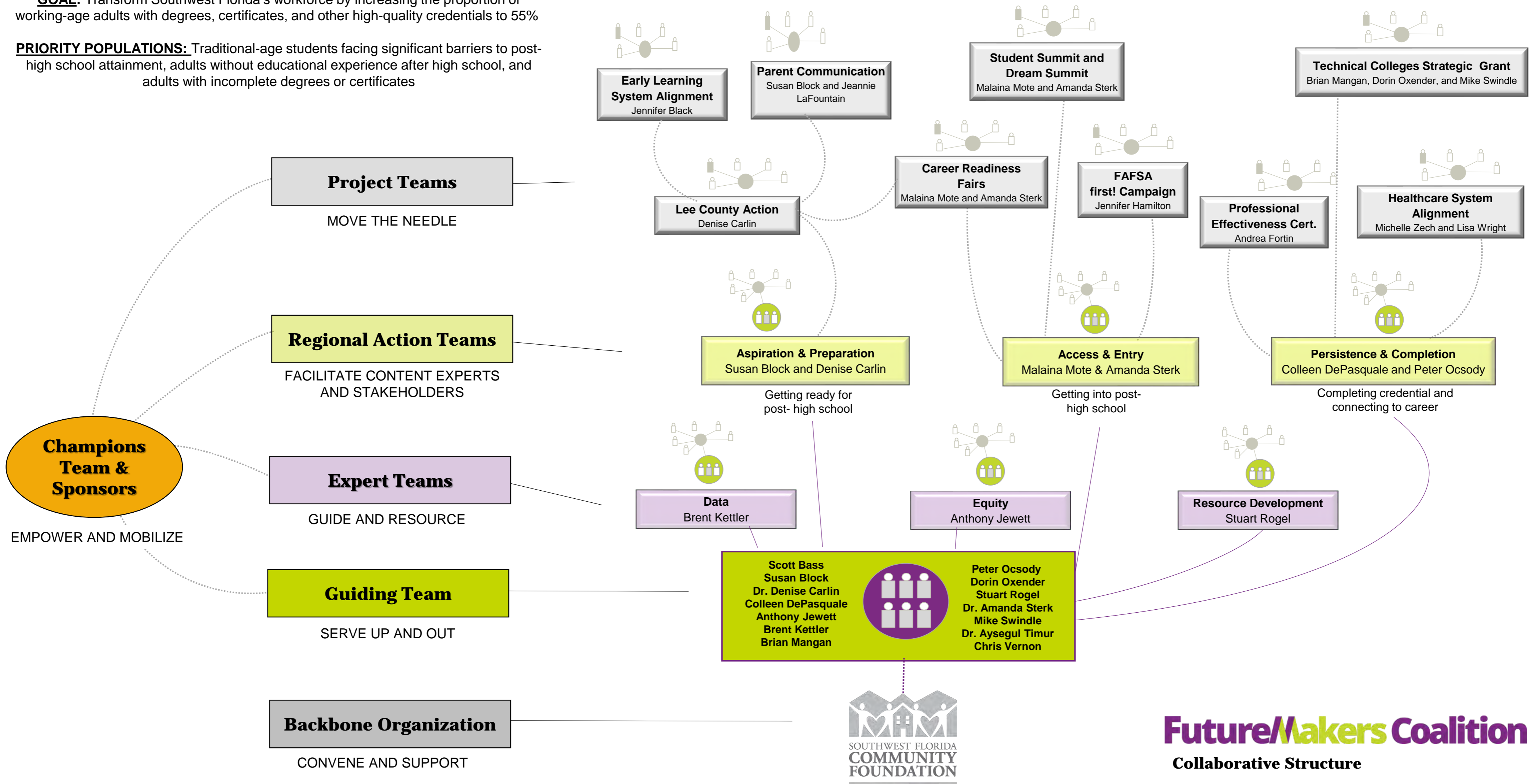


SYSTEM-LEVEL CHANGE

GOAL: Transform Southwest Florida's workforce by increasing the proportion of working-age adults with degrees, certificates, and other high-quality credentials to 55%

PRIORITY POPULATIONS: Traditional-age students facing significant barriers to post-high school attainment, adults without educational experience after high school, and adults with incomplete degrees or certificates






SYSTEM-LEVEL CHANGE

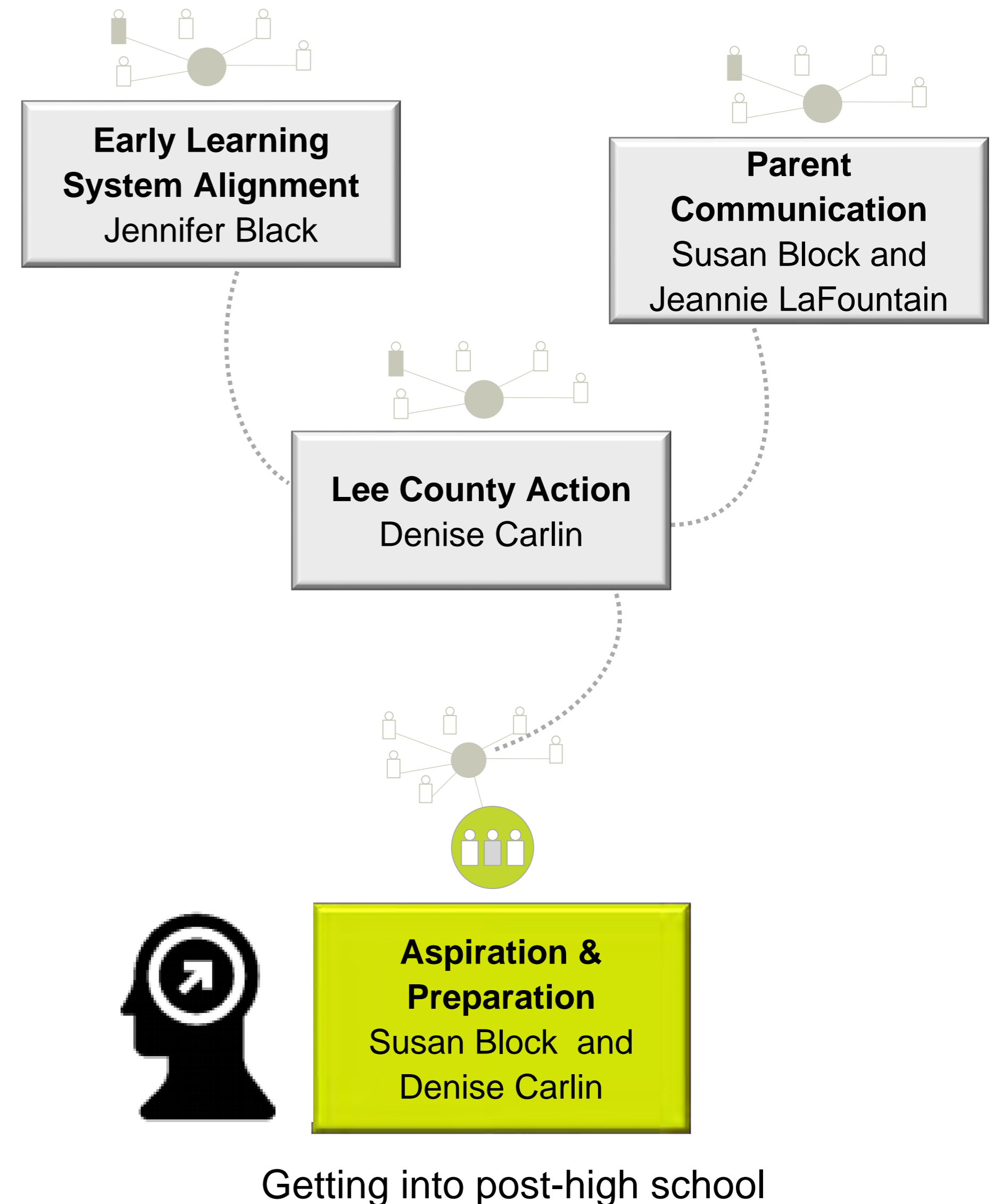
GOAL: Transform Southwest Florida's workforce by increasing the proportion of working-age adults with degrees, certificates, and other high-quality credentials to 55%

PRIORITY POPULATIONS: Traditional-age students facing significant barriers to post-high school attainment, adults without educational experience after high school, and adults with incomplete degrees or certificates

2018 OUTCOMES

	Kindergarten readiness	Increase percentage of students ready to enter kindergarten	
	3rd grade reading	Target 62% of third grade public school students meet or exceed reading proficiency	
	High school graduation	Increase high school graduation rates in SWFL toward 90%	

LEGEND	
	No update
	Trending up
	Trending down



Getting into post-high school




SYSTEM-LEVEL CHANGE

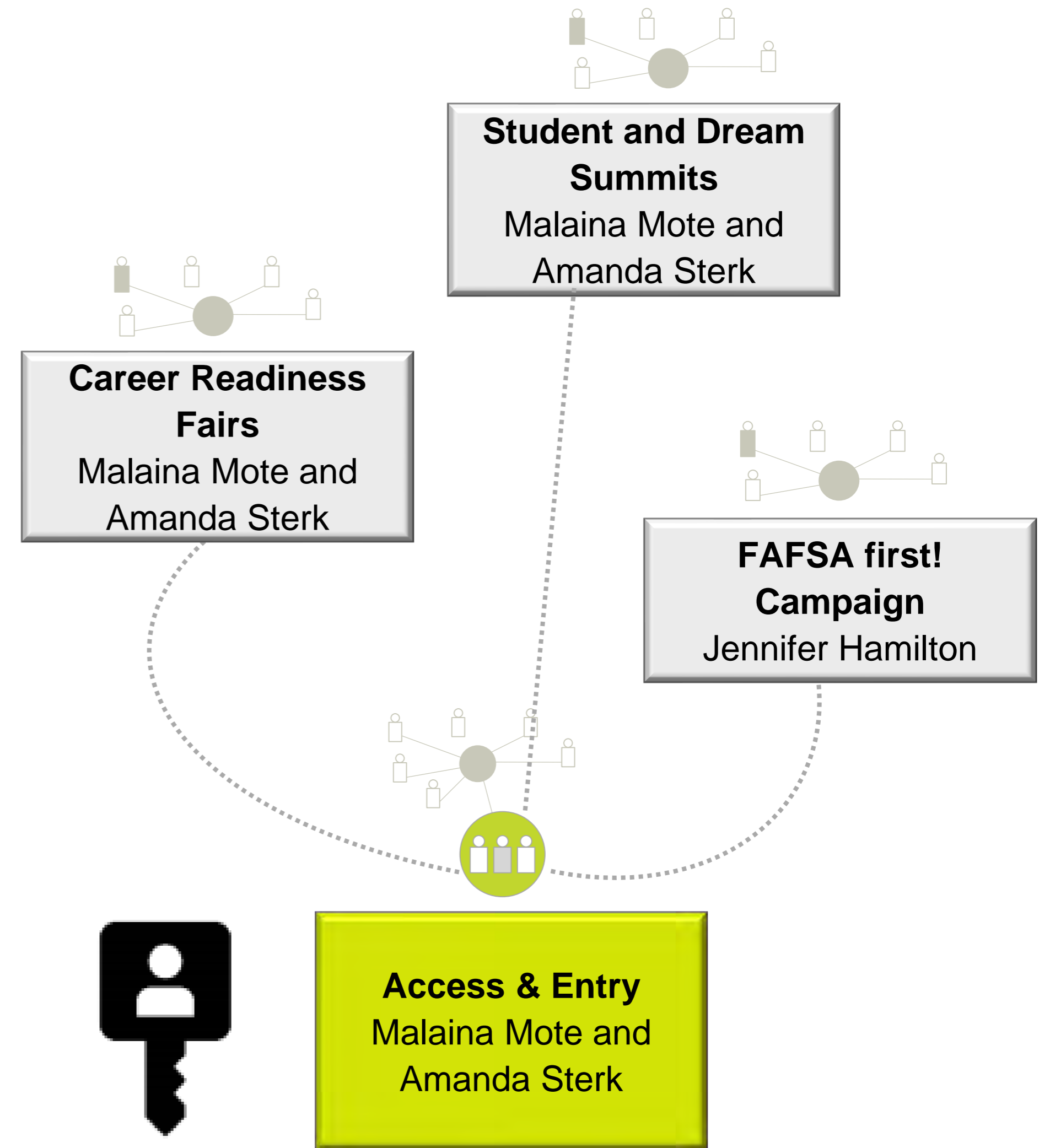
GOAL: Transform Southwest Florida's workforce by increasing the proportion of working-age adults with degrees, certificates, and other high-quality credentials to 55%

PRIORITY POPULATIONS: Traditional-age students facing significant barriers to post-high school attainment, adults without educational experience after high school, and adults with incomplete degrees or certificates

2018 OUTCOMES



LEGEND	
	No update
	Trending up
	Trending down



Getting ready for post-high school

SYSTEM-LEVEL CHANGE

GOAL: Transform Southwest Florida's workforce by increasing the proportion of working-age adults with degrees, certificates, and other high-quality credentials to 55%

PRIORITY POPULATIONS: Traditional-age students facing significant barriers to post-high school attainment, adults without educational experience after high school, and adults with incomplete degrees or certificates

2018 OUTCOMES

	On-time completion	Increase percentage of students completing certificates and certifications in 2 years or less	
	Retention	Increase year to year retention rates at SWFL post-secondary institutions	
	Business partnerships	Increase business-education partnerships	
	Returning adults	Increase number of businesses providing support for returning adults and credentialed workforce training	
	Living wage	Increase percentage of local post-secondary graduates employed with living wages locally	
	Local jobs	Increase number of local post-secondary graduates placed in jobs in SWFL	

LEGEND

-  No update
-  Trending up
-  Trending down

