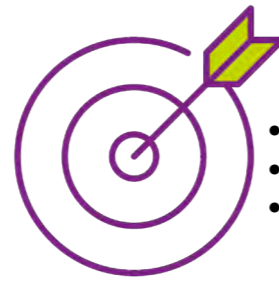


# FutureMakers Coalition

## Collaborative Structure

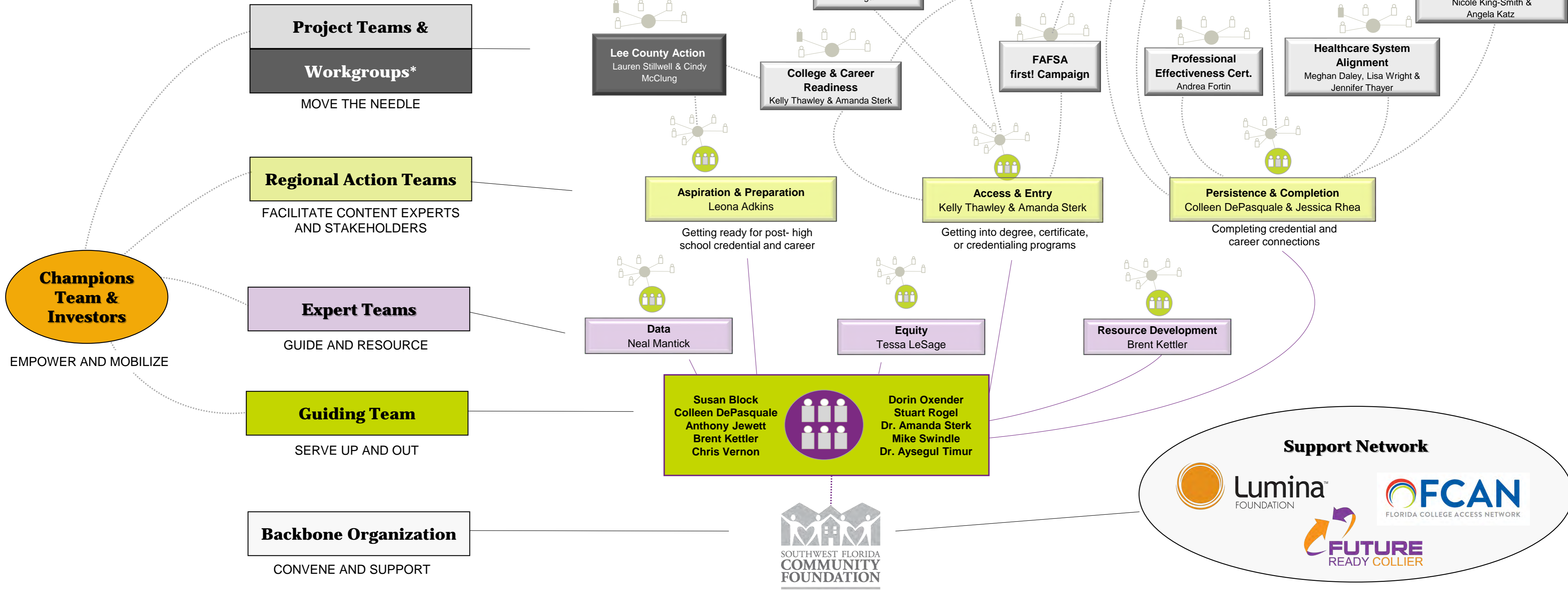
**SYSTEM-LEVEL CHANGE**

Our Goal **55%** of working-age adults will have degrees, certificates, and other high-quality credentials



### PRIORITY POPULATIONS

- Traditional-age students facing significant barriers
- Adults without educational experience after high school
- Adults with incomplete degrees or certificates



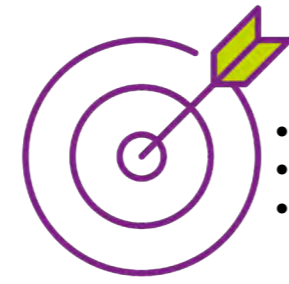
\*Additional Project Teams associated with Workgroups are illustrated online at <https://www.futuremakerscoalition.com/how-we-do-it/>

# FutureMakers Coalition

## Collaborative Structure

**SYSTEM-LEVEL CHANGE**

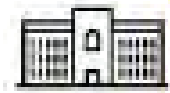
Our Goal **55%** of working-age adults will have degrees, certificates, and other high-quality credentials



### PRIORITY POPULATIONS

- Traditional-age students facing significant barriers
- Adults without educational experience after high school
- Adults with incomplete degrees or certificates

### 2018 OUTCOMES



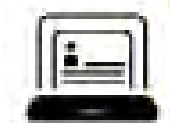
**Enrollment**

Increased postsecondary enrollment in education programs aligned with local economic/workforce needs



**Technical education**

Increase enrollment in technical education



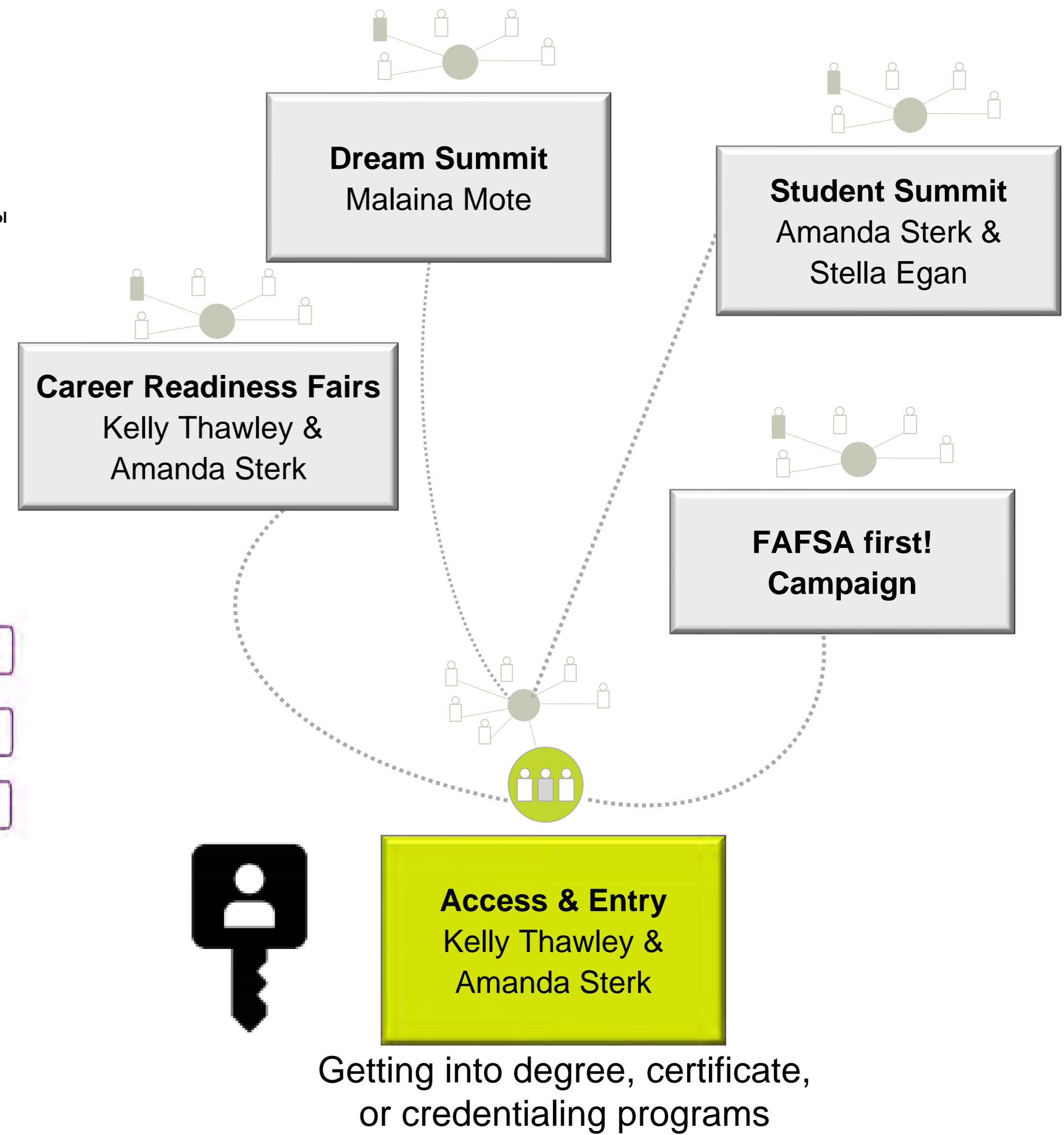
**FAFSA**

Increase FAFSA completion rate



#### LEGEND

- No update
- Trending up
- Trending down

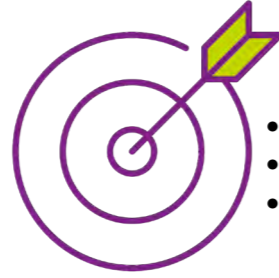


# FutureMakers Coalition

Collaborative Structure

**SYSTEM-LEVEL CHANGE**

Our Goal **55%** of working-age adults will have degrees, certificates, and other high-quality credentials



**PRIORITY POPULATIONS**

- Traditional-age students facing significant barriers
- Adults without educational experience after high school
- Adults with incomplete degrees or certificates

**Early Learning Preferred Providers**  
Tiffany Franklin

**Early Learning PK-3 System Alignment**  
Tiffany Franklin

**Early Learning Parent Communication**  
Jennifer Black

**Lee County Action**  
Lauren Stillwell & Cindy McClung

**Access & Entry's College & Career Readiness Project Team**  
Amanda Sterk & Kelly Thawley

**Aspiration & Preparation**  
Leona Adkins



Getting ready for post-high school credential and career

**2018 OUTCOMES**

	<b>Kindergarten readiness</b>	Increase percentage of students ready to enter kindergarten	
	<b>3<sup>rd</sup> grade reading</b>	Target 62% of third grade public school students meet or exceed reading proficiency	
	<b>High school graduation</b>	Increase high school graduation rates in SWFL toward 90%	

**LEGEND**

- No update
- Trending up
- Trending down

# FutureMakers Coalition

Collaborative Structure

## SYSTEM-LEVEL CHANGE

Our Goal  
**55%**  
of working-age adults will have degrees, certificates, and other high-quality credentials



## PRIORITY POPULATIONS

- Traditional-age students facing significant barriers
- Adults without educational experience after high school
- Adults with incomplete degrees or certificates

## 2018 OUTCOMES



**On-time completion**

Increase percentage of students completing certificates and certifications in 2 years or less



**Retention**

Increase year to year retention rates at SWFL post-secondary institutions



**Business partnerships**

Increase business-education partnerships



**Returning adults**

Increase number of businesses providing support for returning adults and credentialed workforce training



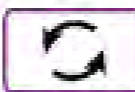
**Living wage**

Increase percentage of local post-secondary graduates employed with living wages locally



**Local jobs**

Increase number of local post-secondary graduates placed in jobs in SWFL



### LEGEND



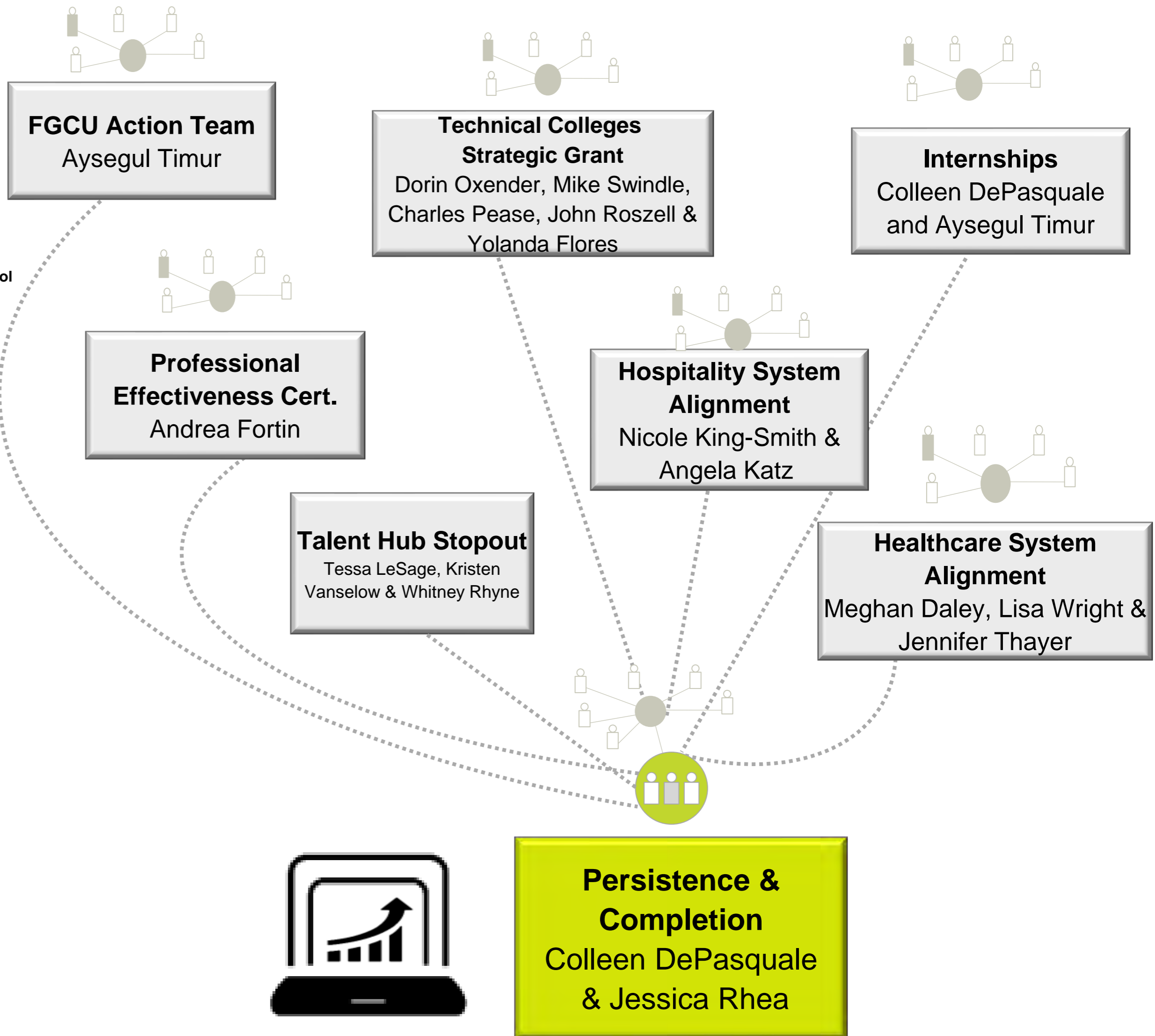
No update



Trending up



Trending down



Completing credential and career connections

# FutureMakers Coalition

Collaborative Structure

**SYSTEM-LEVEL CHANGE**

Our Goal **55%** of working-age adults will have degrees, certificates, and other high-quality credentials

**PRIORITY POPULATIONS**

- Traditional-age students facing significant barriers
- Adults without educational experience after high school
- Adults with incomplete degrees or certificates

**Access & Entry's College & Career Readiness Project Team**  
Amanda Sterk & Kelly Thawley

**Access & Entry FAFSA first! Project Team**

**Enrollment**  
Mitch Cordova

**Faculty Engagement**  
Maria Roca

**Workforce Readiness & Career Development**  
Tifarah Pardue

**Persistence & Completion's Internship Project Team**  
Colleen DePasquale & Tifarah Pardue

**FGCU Complete**  
Kristen Vanselow

**Digital Skills and micro-credentialing**  
Aysegul Timur

**FGCU Action Project Team**  
Aysegul Timur

	<b>On-time completion</b>	Increase percentage of students completing certificates and certifications in 2 years or less	
	<b>Retention</b>	Increase year to year retention rates at SWFL post-secondary institutions	
	<b>Business partnerships</b>	Increase business-education partnerships	
	<b>Returning adults</b>	Increase number of businesses providing support for returning adults and credentialed workforce training	
	<b>Living wage</b>	Increase percentage of local post-secondary graduates employed with living wages locally	
	<b>Local jobs</b>	Increase number of local post-secondary graduates placed in jobs in SWFL	

**LEGEND**

- No update
- Trending up
- Trending down

